



Test Report

NO.: BDCMVW073110704

Date: 2016.10.28

Page 1 of 5

Applicant:

Luoyang Shenyu Molybdenum Co.,Ltd

The following sample(s) was/were submitted and identified on behalf of the client as:

Sample Name: Molybdenum Disulfide

Sample Model: SY-MoS2

Manufacturer: Luoyang Shenyu Molybdenum Co.,Ltd

Sample Description: Black powder

Sample Received Date: 2016.10.24

Testing Period: 2016.10.24 to 2016.10.28

Test Requested: RoHS Directive 2011/65/EU & (EU)2015/863 Annex II

Test Methods:

- (1) IEC 62321-5 Edition 1.0:2013 method, Lead Analysis is performed by AAS
- (2) IEC 62321-5 Edition 1.0:2013 method, Cadmium Analysis is performed by AAS
- (3) IEC 62321-4 Edition 1.0:2013 method, Mercury Analysis is performed by ICP-OES
- (4) IEC 62321 Edition 1.0:2008 method, Hexavalent Chromium Analysis is performed by UV-Vis
- (5) IEC 62321-6 Edition 1.0:2015 method, PBBs and PBDEs Analysis is performed by GC-MS
- (6) IEC 62321-8 (111/321/CD) method, Phthalate Analysis is performed by GC-MS

Testing Results: Please refer to next page(s)

Approved by:

Code: b96512mml

The page below is blank





Test Report

NO.: BDCMVW073110704

Date: 2016.10.28

Page 2 of 5

Test Results (Unit: mg/kg)

Test Item	MDL	Test Result	RoHS Limit
Lead (Pb)	1	N.D.	1000
Cadmium (Cd)	1	N.D.	100
Mercury (Hg)	1	N.D.	1000
Hexavalent Chromium (Cr ⁶⁺)	1	N.D.	1000
Sum of PBBs	—	N.D.	1000
Bromobiphenyl	5	N.D.	—
Dibromobiphenyl	5	N.D.	—
Tribromobiphenyl	5	N.D.	—
Tetrabromobiphenyl	5	N.D.	—
Pentabromobiphenyl	5	N.D.	—
Hexabromobiphenyl	5	N.D.	—
Heptabromobiphenyl	5	N.D.	—
Octabromobiphenyl	5	N.D.	—
Nonabromobiphenyl	5	N.D.	—
Decabromobiphenyl	5	N.D.	—
Sum of PBDEs	—	N.D.	1000
Bromodiphenyl ether	5	N.D.	—
Dibromodiphenyl ether	5	N.D.	—
Tribromodiphenyl ether	5	N.D.	—
Tetrabromodiphenyl ether	5	N.D.	—
Pentabromodiphenyl ether	5	N.D.	—
Hexabromodiphenyl ether	5	N.D.	—
Heptabromodiphenyl ether	5	N.D.	—
Octabromodiphenyl ether	5	N.D.	—
Nonabromodiphenyl ether	5	N.D.	—
Decabromodiphenyl ether	5	N.D.	—

The page below is blank

www.ponytest.com  Hotline 400-819-5688



Test Report

NO.: BDCMVWWO73110704

Date: 2016.10.28

Page 3 of 5

Test Results (Unit: mg/kg)

Test Item	MDL	Test Result	RoHS Limit
DEHP	50	N.D.	1000
DBP	50	N.D.	1000
BBP	50	N.D.	1000
DIBP	50	N.D.	1000

- Note:
- (1) mg/kg = ppm
 - (2) “—” = Does not stipulate
 - (3) N.D. = Not Detected (<MDL)
 - (4) MDL = Method Detection Limit
 - (5) The most allowable limit value reference to RoHS Directive 2011/65/EU & (EU)2015/863 Annex II

Sample No. & Photo:



Pony authenticate the photo on original report only

The page below is blank

www.ponytest.com Hotline 400-819-5688



Test Report

NO.: BDCMVW073110704

Date: 2016.10.28

Page 4 of 5

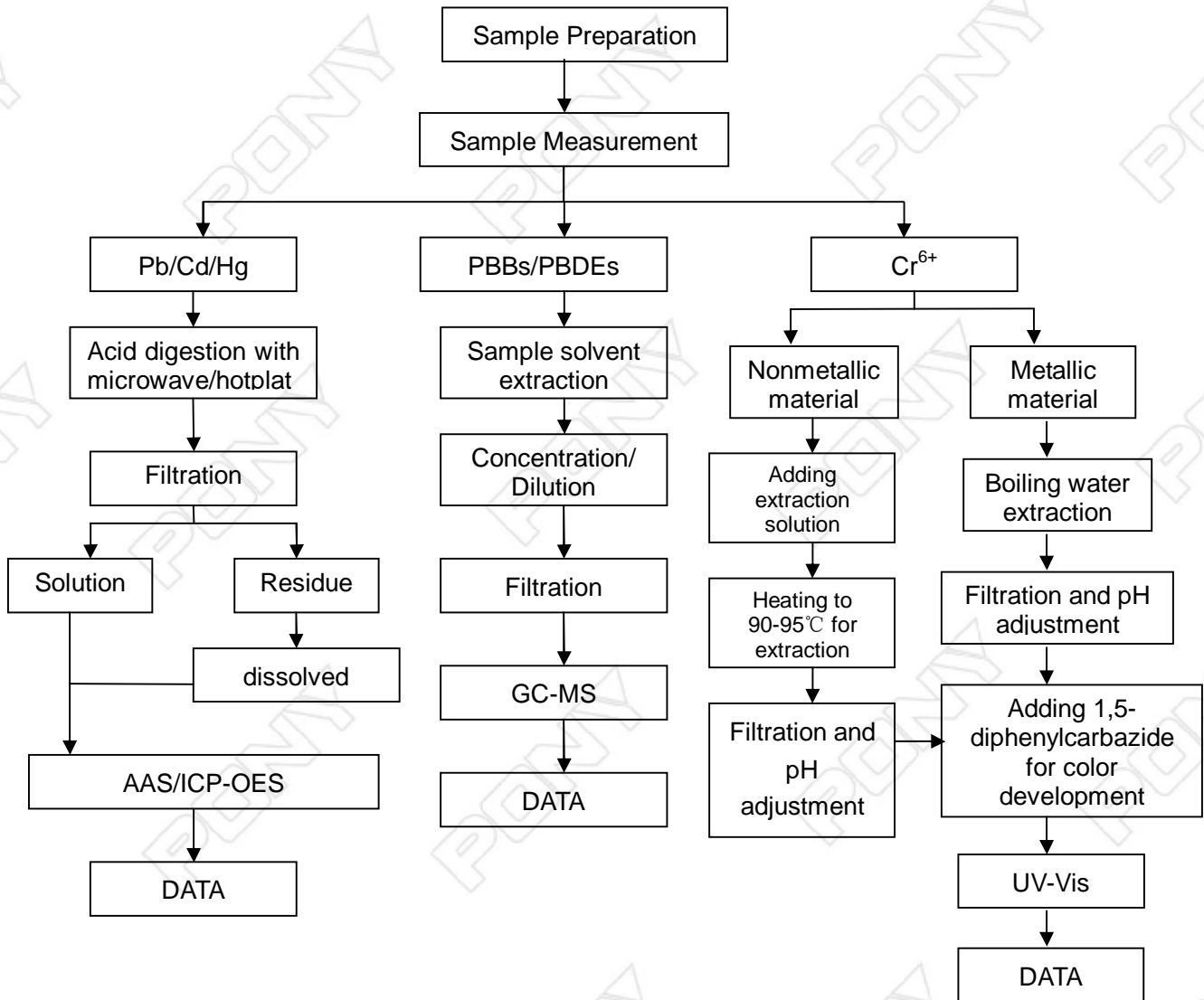
Measurement Flow-chart

Tested by: Yu Xin

Checked by: Wang Yunxia

Person in charge of the lab: Cao Jia

These Samples Were Dissolved Totally By Pre-conditioning Method According To Below Flow Chart. (Cr⁶⁺ And PBBs/PBDEs Test Method Excluded)



The page below is blank

www.ponytest.com ☎ Hotline 400-819-5688



Test Report

NO.: BDCMVWVO73110704

Date: 2016.10.28

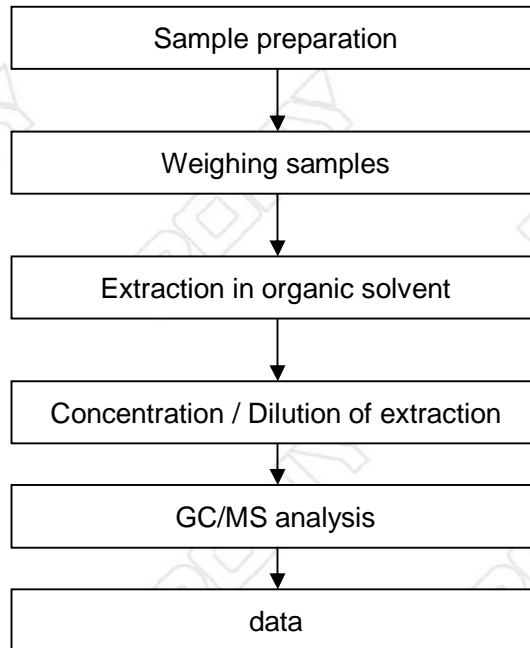
Page 5 of 5

Phthalate Flow Chart

Tested by: Xu Yufeng

Checked by: Wang Yunxia

Person in charge of the lab: Cao Jia



End of Report

www.ponytest.com Hotline 400-819-5688