

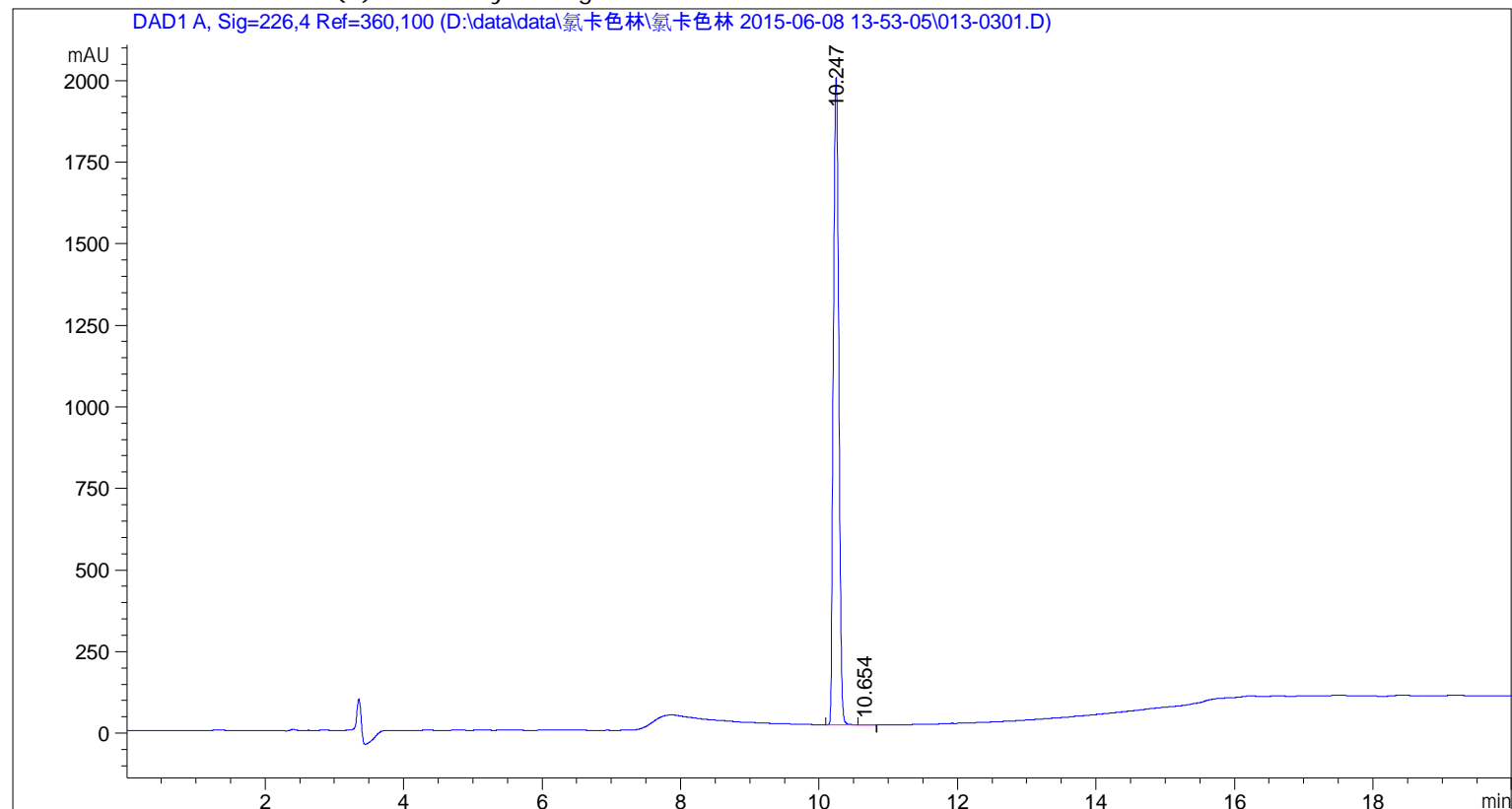
Sample Name: 氯卡色林 20150502

```

=====
Acq. Operator   : SYSTEM                      Seq. Line :    3
Acq. Instrument : 1260                        Location  :   13
Injection Date  : 6/8/2015 14:45:59          Inj       :    1
                                           Inj Volume: 20.000 µl
Method         : D:\data\data\氯卡色林\氯卡色林 2015-06-08 13-53-05\氯卡色林.M (Sequence
                Method)
Last changed   : 6/8/2015 13:53:05 by SYSTEM
Sample Info    : 氯卡色林 20150502
=====

```

Additional Info : Peak(s) manually integrated



```

=====
                          Area Percent Report
=====

```

```

Sorted By      :      Signal
Multiplier     :      1.0000
Dilution       :      1.0000
Use Multiplier & Dilution Factor with ISTDs

```

Signal 1: DAD1 A, Sig=226,4 Ref=360,100

Peak #	RetTime [min]	Type	Width [min]	Area [mAU*s]	Height [mAU]	Area %
1	10.247	BV R	0.0907	1.08218e4	1983.04358	99.9459
2	10.654	VB E	0.0751	5.85437	1.11719	0.0541

Totals : 1.08276e4 1984.16077

*** End of Report ***